

Camera Systems

BLS supply a range of colour borehole inspection cameras featuring high resolution and high sensitivity CCD sensors.

All cameras operate on co-axial logging cables and on short lengths of standard mono-conductor cables. As a result, the cameras can be run on the same winch as the logging sondes.

🔦 Dual Camera

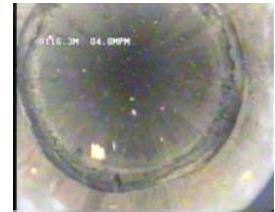
The Dual Camera sonde offers the convenience of both downhole and sidewall viewing facility by switching between two individual cameras, one directed axially and the other directed radially with 360° infinite rotation.

In addition, this sonde can be fitted with a compass for image orientation.

The side view objective is fitted with an array of white, high luminosity LED lights. Downhole lighting is supplied with either a frontal light head or a ring light for larger diameter boreholes.

🔦 Specifications

- Image sensor: 1/3" SUPER-HAD colour CCD sensor
- Resolution: 420 TV lines
- Min. illumination: 0.5 Lux
- Lens size: 6 mm and 2.6 mm (or as required)
- Electronic Iris, Remotely controlled focus
- White LED integral lighting for side-view objective
- 100 W Detachable Frontal light
- Optional 80W Ring Light (Ø135 mm)
- External Diameter: 72 mm
- Temperature rating: 50°C



Camera Systems

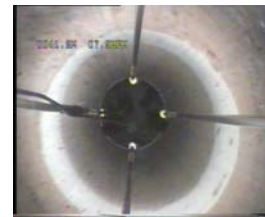
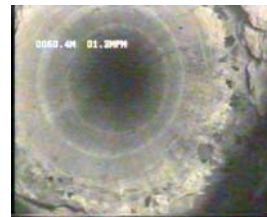
🔦 Axial Viewing Cameras

The Axial Viewing Camera sondes offer a wide angle lens to maximise the frontal field of vision.

With a 0.5 lux sensitivity sensor and frontal light head, this camera is suitable for viewing in low light environment. An optional side-viewing mirror attachment is available for borehole sidewall inspection.

Specifications

- Image sensor: 1/3" colour CCD sensor
- Resolution: 420 TV lines
- Min. illumination: 0.5 Lux
- Lens size: 2.6 mm (or as required)
- Automatic Iris
- Fixed focus
(Remote focus optional for 72 mm Camera only)
- 100 W Detachable Frontal light
- Optional 80 W Ring Light
- External Diameter: 57 / 72mm
- Temperature rating: 50°C



🔦 Camera Control Unit

Cameras power and lighting is controlled from a compact surface panel. Images can be displayed either on a video monitor or on a PC. Clients can also provide their own monitors.

🔦 VCR / DVD

An integrated rack mounted VHS VCR or DVD is optionally available. Client can also provide their own.



🔦 Image Orientation and Borehole Inclination Module

An option to measure and display image orientation and borehole inclination on the video monitor is available with the Dual Camera.